

How to sign your life away

Network Europe would like to encourage everyone in the European live music business to become a member! A strong representation and a strong Association will help in getting the best results for the members, for their artists and for the European live music industry. The membership fee is low to enable everyone to join and support our Association. A form for membership application is available through our office or on the website.

WWW.NETWORKEUROPE.NET

We need Members... and Sponsors too!

Network Europe offers opportunities for sponsors. If you wish to support the activities of our Association, and wish to support the live music industry, its voice towards governments and our efforts to promote European talent, your financial contribution is welcome. Please contact us for more details.

Where we are

Network Europe
P.O. Box 1519
6501 BM NIJMEGEN
The Netherlands
Phone +31.24.323 9322
Fax +31.24.323 2762
Mail info@networkeurope.net
Web www.networkeurope.net



EUROPE
NETWORK

LIVE MUSIC BIZZ
TEAMS UP



WHAT IS IT?

Network Europe is an association for agents, promoters, bookers and talent buyers working in Europe. Network Europe is an active and lively meeting place since 1986, and also a formal Association since September 2003.

Keeping busy

Network Europe works on improving the conditions for the live music market in Europe and for European talent by cooperating with other organisations such as the European Music Office, Yourope (European festivals), the EBU (European Broadcasting Union) and IMMF (music managers). Network Europe also supports the European Talent Exchange Program. In 2005, Network Europe board members have been very active in setting up the European Live Music Forum (ELMF), an umbrella organisation for associations with members in the European live music industry. The ELMF will be a pro-active speaking partner for European government bodies for all aspects of the live music industry.

Network Europe is a founding member of the ELMF, and one of our board members is also ELMF-board member: Tapio Korjus.

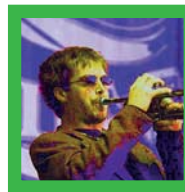
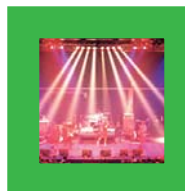
Network Europe also submits musical talent to showcase-festivals like EuroSonic, PopKomm, by:Larm and others, and plays an active role in these showcase-festivals by watching and judging the performing artists, giving feedback to the showcase-festivals, by actively participating in panels etc. and by promoting shows all over Europe for selected artists from these showcase-festivals. Occasionally, Network Europe organises its own exclusive showcases at showcase-festivals, enabling our members to present their artists in a very exclusive way.

Sitting down

Accessible, open, informative and fun - these words describe the Meetings, where members get together to discuss their business and the market. It's about business and about fun, and about enjoying the unique gift of live music.

Network Europe has official meetings at least twice a year. One of these is, by tradition almost, during Noorderslag/EuroSonic (early January in Groningen, The Netherlands).

2005 is the second year in which the second general meeting was during PopKomm in Berlin, Germany.



What's in it for you?

As a member of Network Europe, you support our activities to further your business and to further European talent. You also support our contribution to the ELMF. Help Network Europe be a strong Association and become a member! And ask your colleagues and competitors to become a member too. Network Europe members usually receive exclusive deals to attend events like Noorderslag/EuroSonic, PopKomm, by:Larm and other showcase-festivals and seminars. Benefits usually include free entrance to these events, plus additional perks. Other special offers, from companies offering other services to the live music industry, are also available for our members.

A little history

Network Europe started in 1986. Meetings took place twice a year in major cities all over Europe. Showcases with talent from all over Europe, and the exchange of information, have always been an integral part of Network Europe meetings, from the early days onwards. After a break of a few years in the nineties, Network Europe was revitalized again in 1999. Lots of members from the early days were still in business, partly still as small or medium-sized independents, partly incorporated in multinational corporations. These members wanted to see new meetings of Network Europe. At the same time the organisers of the Noorderslag/EuroSonic Weekend were offering help to get Network Europe to meet at this event. In January 2000 the first meeting of the revitalized Network Europe was held there. Many new members joined. In 2003, Network Europe transformed into an official Association.

The current Board of the Association:

Rob Berends chairman (Paperclip Agency, The Netherlands) Corrado Gioia board member (Rumble Fish, Italy) Tapio Korjus board member (Rockadillo, Finland) Marc Lambelet treasurer (Black Lamb, Switzerland) Ben Herbière board member (3C, France)

NETWORK EUROPE